



# Window Design Center

608-271-8002 800-887-8720  
www.windowcenter.com

Fall 2003

# Partners' Update

CA4218-12

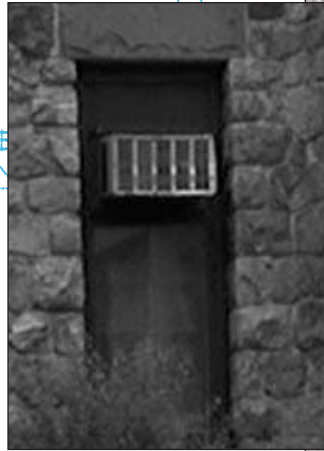
## The view from here:

The good news is we had the busiest summer on record, and the even better news is that we kept up with it all. The credit for that goes to our conscientious staff, and to the technological advances we've put in place over the past couple of years.

We are only beginning to realize the efficiencies and capabilities offered by these new systems, but already we've seen benefits for our customers. Our new IT Manager, **Jonathan Yankovich**, started in July, and he continues to move us forward with Siebel and ECommerce. These systems give WDC staff members access to customer information from initial inquiry through to order tracking and service follow-up -- all to insure we do the best job of taking care of our clients. In the near future we will be rolling out "web portals" which will allow our contractor and architect clients to view their information, communicate needs, track service issue status, receive product information updates--all of this and more real time, 24/7.

Finally, we welcome our newest staff members: **Christine Hartlet** as Front Desk Manager, and **Brooke McIntyre**, Sales Support Specialist for the Branchaw Team. We hope you get a chance to meet them when you call in or visit!

Craig A. Patchin, President  
craigp@windowcenter.com



Inset: Fargo Library window before restoration. Right: The new Jeld-Wen® Pozzi Custom windows restored the details of the original windows.



## RE-MAKING HISTORY

Architect **Dan Kabara** of **Engberg Anderson Design Partnership** was commissioned to work on restoration plans for the Fargo Library in Lake Mills. One of his goals was to restore the look, feel, and details of the original windows. Previous window "improvements" had not been done with sensitivity to the original design, and the windows needed to be changed.

**Scott Hogland**, Window Design Center Project Manager, analyzed the needs and listened closely to the project goals. Using the flexibility inherent in Jeld-Wen® Pozzi Custom products, he provided custom sizing where needed, a custom clad exterior color, two different divided lite bar sizes,

and a solution for the exterior trim components. Pozzi Custom products allowed Scott to satisfy all these requirements within budget, on time, and without hassles for **Maas Brothers Construction**, the General Contractor for the project.



The Beloit Hilton project, shown here, was another project that required historic windows with modern-day innovations.

CC2448 CC2448

# Window Design Center: Wisconsin's Leading Jeld-wen® Distributor

**POZZI® CUSTOM COLLECTION**  
**NORCO® PREMIUM COLLECTION**  
**IWP® CUSTOM DOORS**

As partners we are excited about the Jeld-Wen® Windows and Doors product quality and consistency, and their unparalleled commitment to service. They continue to lead the industry in innovation and product improvement. Here are a few of the new features due out in the next several months:

- an exclusive wood treatment process, now in production, which will make an unheard-of 20-year wood warranty a reality;
- enhanced Jeld-Wen® branding to allow customers to identify Jeld-Wen as an industry leader for product, and customer service;
- even more choices within the Pozzi Custom Collection including custom colors, copper exteriors, interior hardwoods, custom mutins, and commercial products.

As a key partner, WDC continues to focus on residential and commercial problem solving through consultation, creativity, competitive pricing, and professional service. Give us a call with your next project—we would love the opportunity to work with you. Visit the new Jeld-Wen® website at [www.jeld-wen.com](http://www.jeld-wen.com).

# SOLUTIONS

## PROJECT: Meriter Maingate

Salesperson: Charlie Branchaw  
Project Mgr: John Estes  
Product: Traco  
Contractor: Krupp Construction

**THE ISSUES:** Needed to match exterior window trim to existing blue, but wanted white interior trim. Building a new structure within a campus of healing facilities made this a sensitive job. No parking and busy downtown streets created tight delivery parameters.

**THE SOLUTION:** Exclusive Traco two-color process allowed for interior and exterior color choices. WDC coordinated weekend deliveries to ease congestion and avoid job-site delays. A WDC project manager was assigned to assure all went smoothly.

## PROJECT: Wisconsin State Capitol Cupola

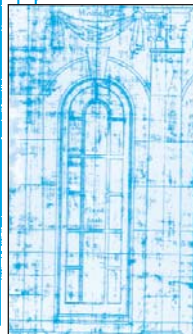
Salesperson: Chas Vaughan  
Product: Marvin Custom Wood Sash  
Contractor: J.P. Cullen

**THE ISSUE:** Need for 8 historically accurate replacement windows in the cupola positioned atop the capital dome.

**THE SOLUTION:** Vaughan researched the original blueprints, then took exacting measurements to create windows made to the 1906 drawings. To reach the interior he scaled six floors of circular iron stairways suspended from the dome. He utilized scaffolding in place around the dome to obtain exterior measurements. The new Marvin windows are true divided lite windows with radiused thermal panes. The windows were crafted to fit perfectly into the existing frames.



These Marvin windows, were created from the original 1906 drawings shown at left.



PLY 11 7/8" LVL BEAM

BALCONY ABOVE

DOUBLE  
KET

RAILINGS

3-PLY 9 1/2  
3-Ø

6524 Seybold Road Madison, WI 53719  
www.windowcenter.com 608-271-8002

Window Design Center



Return Service Requested

PRSRST STD  
U.S. Postage  
PAID  
Permit #2783  
Madison, WI

5'-10"